

GOLFLSCHAKELAAR  
 KG I } GETEKEND IN STAND KG I  
 KG II }  
 KG III }

GRAM. SCHAKELAAR }  
 RADIO } GETEKEND IN STAND GRAM.

FIG. 1

ERRRES  
 KY 647

S	71, 72, 73, 74, 75, 76, 77,	1, 2, 3, 4, 5, 6,	11, 12, 13, 14, 15, 16,	20, 21, 22, 23, 24, 25, 26,	31, 32, 33, 34,	41, 42, 43, 44, 40,	51, 52, 53, 50,	60,
C	1,	2, 3, 4, 44, 5, 6, 33, 10, 45, 51, 14, 46,	47, 7, 8, 9, 49, 11, 13, 12, 43, 50, 16, 17, 52, 18,	19, 21, 22, 24, 23, 27, 48,	29,	26, 31, 32, 20, 34, 36, 41, 37, 38, 39,	40, 42,	25,
R		1, 5, 33, 4, 39, 2, 3, 32,	9, 6, 34, 8, 9, 10,	35,	36,	37, 38,	30,	11, 13, 14, 15, 10, 21, 22, 23, 16, 17, 19, 10, 25, 41, 27, 26, 28, 29, 31,



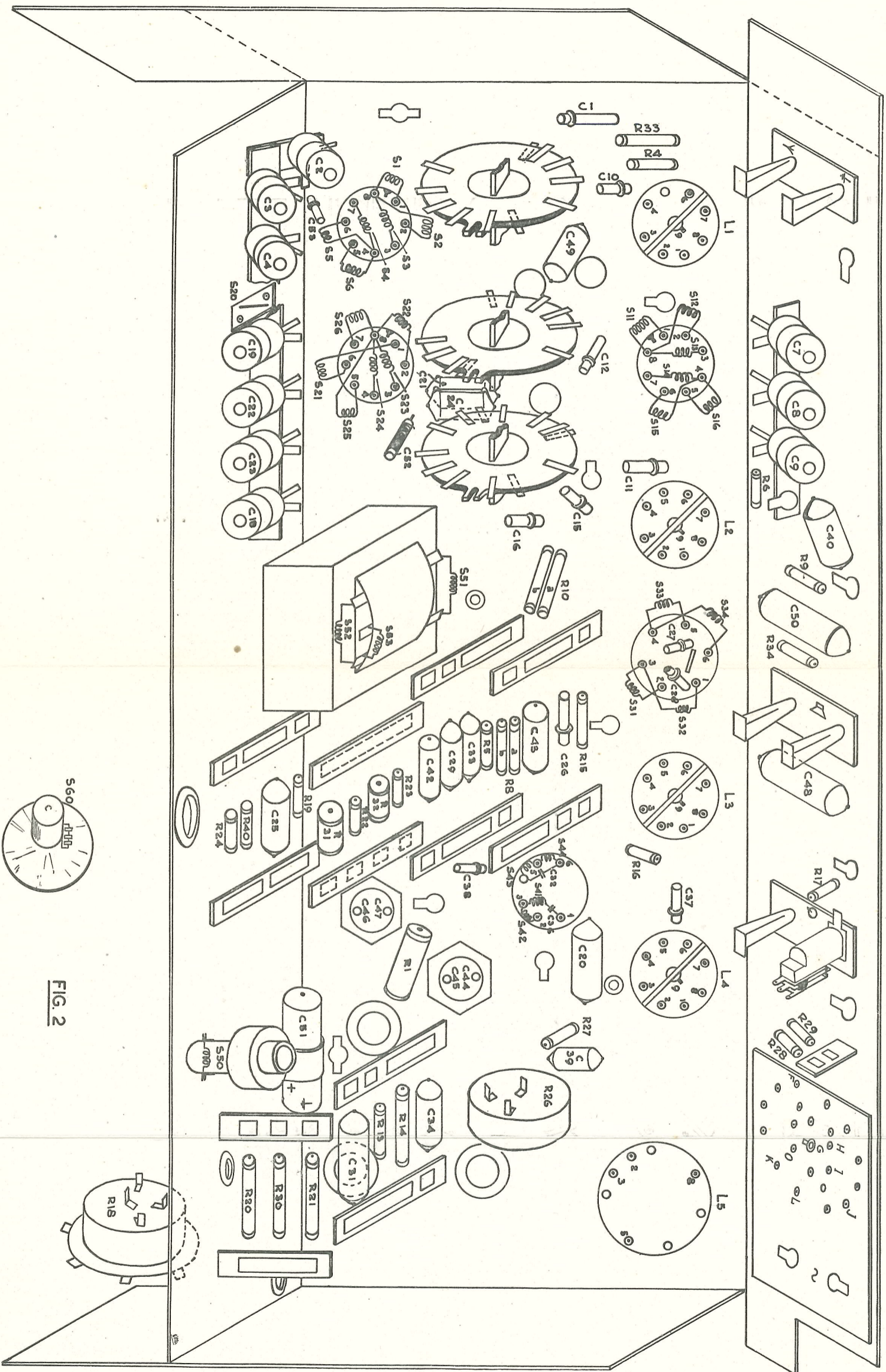
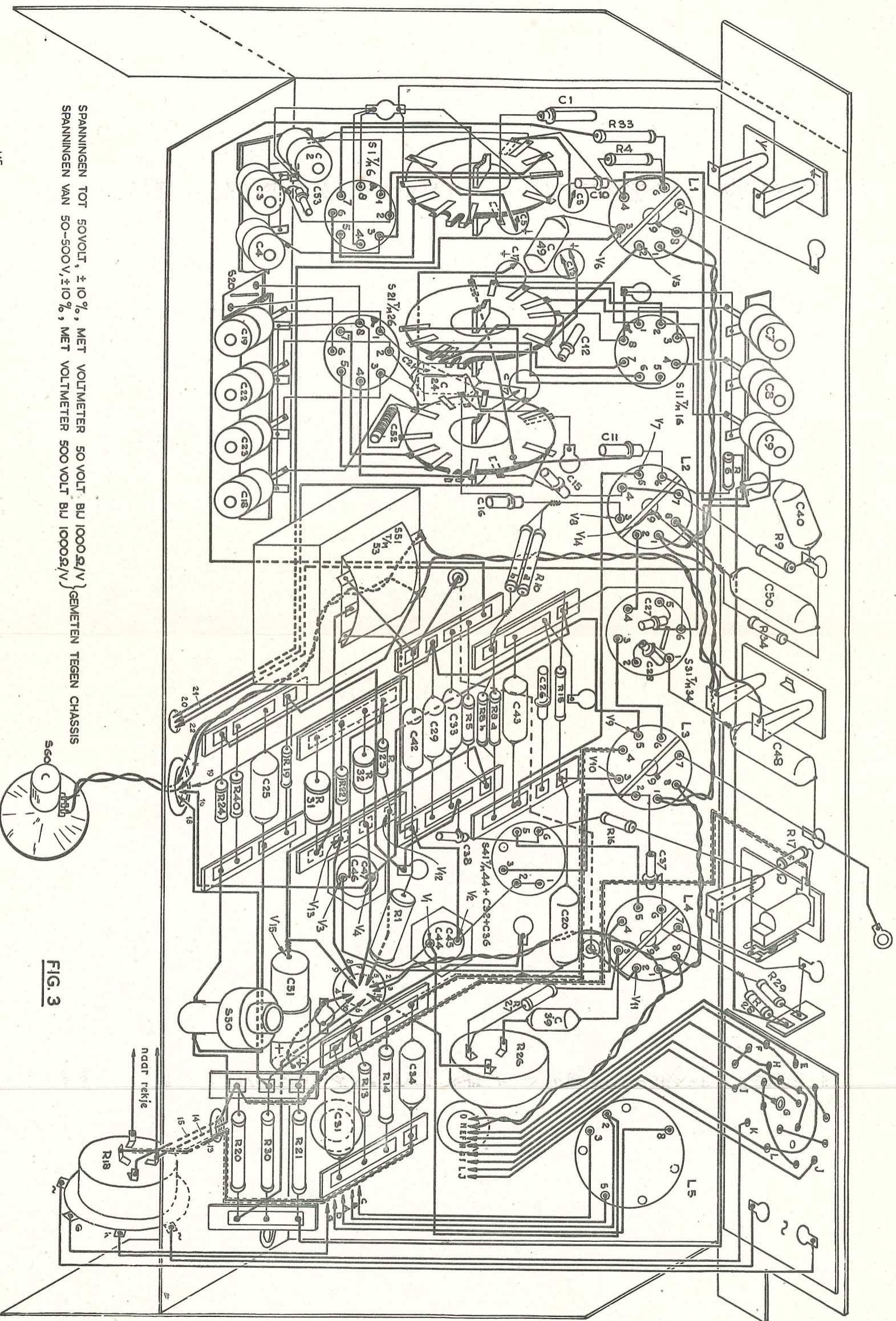


FIG. 2

ERRRES  
KY 647

S	1, 2, 3, 4, 5, 6, 11, 12, 13, 14, 15, 16, 20, 21, 22, 23, 24, 25, 26,	51, 52, 53, 54,	31, 32, 33, 34,	60,	41, 42, 43, 44,	50,
C	53, 1, 2, 10, 3, 5, 4, 9, 4, 17, 13, 7, 19, 12, 21, 24, 8, 22,	52, 9, 11, 24, 15, 16, 18, 40,	50, 27, 28,	26, 43,	33, 29, 42, 48,	25, 38, 37, 47, 46, 32, 36, 20, 44, 45, 51, 39,
R	33, 4,	6,	9, 10,	34,	15,	8, 5, 23, 32, 22, 31, 19, 40, 24, 16, 17, 1,
S						28, 29, 27,
C						26, 14, 13,
R						21, 30, 20, 18,





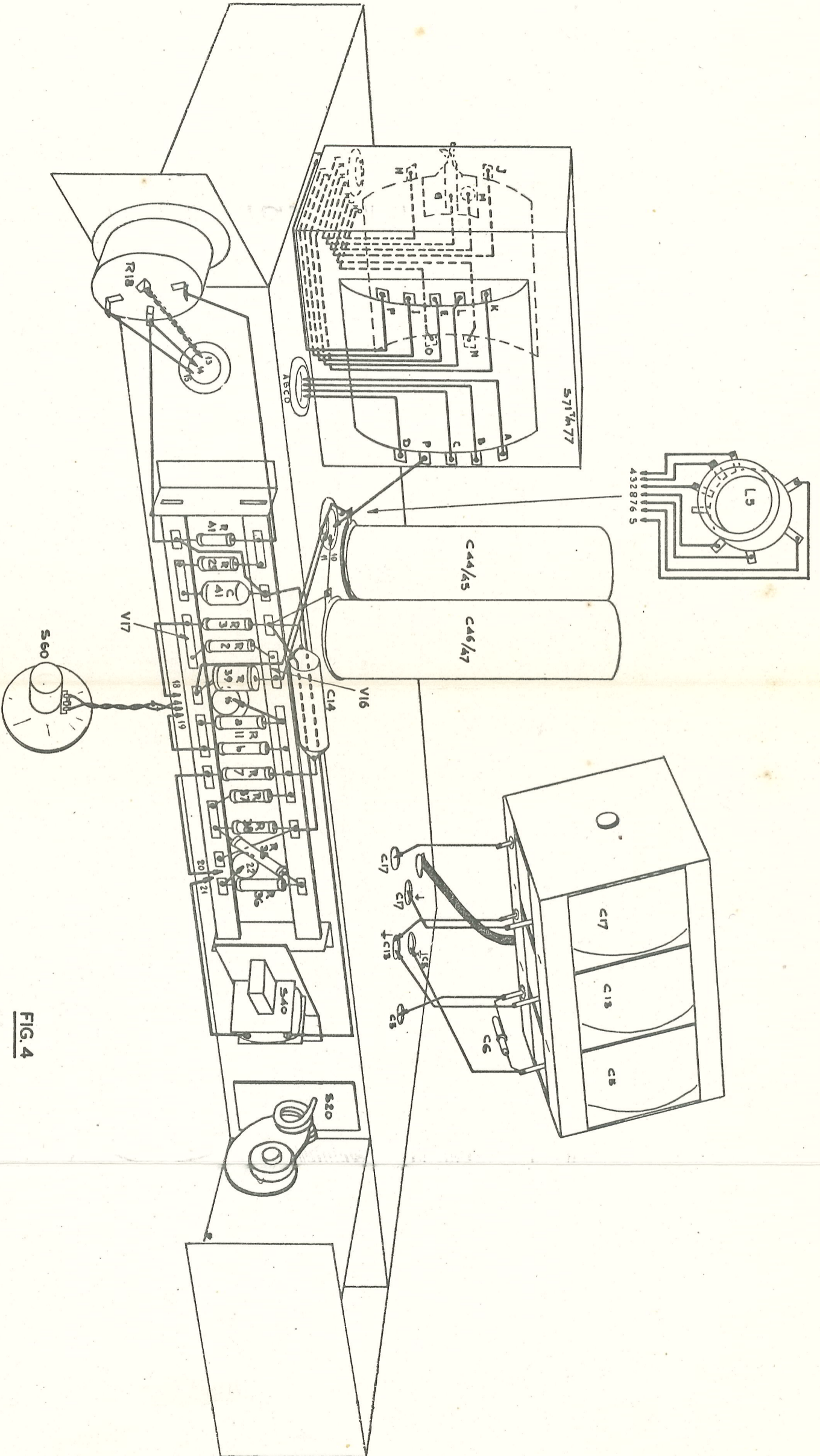
SPANNINGEN TOT 50VOLT,  $\pm 10\%$ , MET VOLTMETER 50 VOLT BIJ 1000 $\Omega/V$  } GEMETEN TEGEN CHASSIS  
 SPANNINGEN VAN 50-500V,  $\pm 10\%$ , MET VOLTMETER 500 VOLT BIJ 1000 $\Omega/V$  }

FIG. 3

	VOLT		VOLT
S	170	V5	
C	80	V6	
R	90	V7	
	2	V14	
	125	V8	
	70	V9	
	60	V10	
	47	V12	
	39	V13	
	245	V2	
	260	V1	
	-10	V15	
	50	V3	
	220	V4	
	205	V11	
	220		
S			
C	1, 2, 3, 4, 5, 6, 11, 12, 13, 14, 15, 16, 20, 21, 22, 23, 24, 25, 26,		
R	53, 1, 2, 10, 3, 5, 49, 4, 17, 13, 7, 19, 12, 21, 24, 8, 22, 52, 9, 11, 24, 15, 16, 18, 40, 50, 27, 28, 26, 43, 33, 29, 42, 48, 25, 38, 37, 47, 46, 32, 36, 20, 44, 45, 51, 39, 34, 31, 33, 4, 33, 4,		

ERRRES  
 KY 647





SPANINGEN TOT 50 VOLT, ± 10%, MET VOLTMEETER 50V01 BU 1000Ω/V, GEMETEN TEGEN CHASSIS

FIG. 4

VOLT	71, 72, 73, 74, 75, 76, 77,	-25	-5	60,	40,	20,
S						
C				44, 45, 46, 47,		
R	18,	41, 25,	3, 2,	39,	14,	11,
					7, 3, 7,	36,
					35,	36,
					17,	13,
					5, 6,	

ERRRES  
KY 647

VOLT	40,	20,
S		
C		
R		